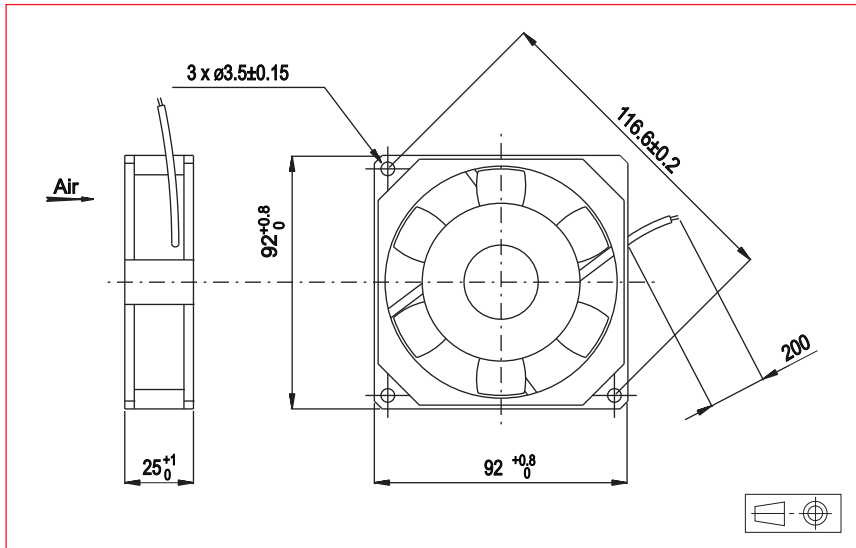


**3,622" x 3,622" x 0,984" 92 x 92 x 25 mm**

**99XV**

**ETRI®**

400 Hz Fans



**Approvals**

NATO codification (not on all part numbers, please consult the factory for more detailed information)

**Life expectancy**

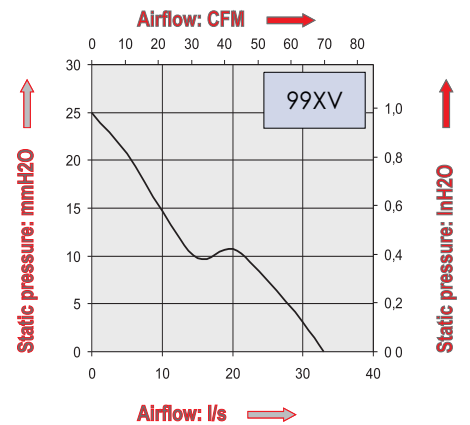
L-10 LIFE AT 40°C:  
35 000 hours

**400 Hz Motor**

Housing material: zamak  
Impeller material: plastic UL 94 VO  
Weight: 390 g  
Bearing system: ball bearings

Connection: flying leads

**Available with:**  
- Speed sensor



Part Number	Nominal voltage	Airflow		Noise level	Nominal speed	Phases	Capacitor	Input power	Nominal Current	Starting Current	Operating temperature	
	V	l/s	Cfm	dB(A)	RPM		(not included)	W	mA	mA	Min.°C	Max.°C
99XV0162001	115	33	70	55	5500	3		14	130	280	-10	70
	115	33	70	55	5500	1	0,47	14	145	225	-10	70
99XV0160001	200	33	70	55	5500	3		14	75	160	-10	70
	200	33	70	55	5500	1	0,15	14	85	130	-10	70

**Additional versions:**  
Salt spray protected - Shock and vibration protected - Marine specifications  
Wide temperature range